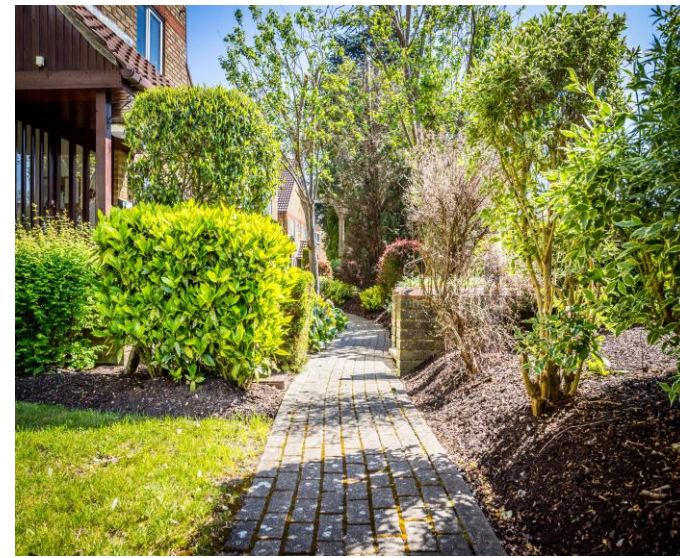





HENLEY HOMES

12 Kempton Court | Kempton Avenue
Sunbury-On-Thames | Surrey TW16 5PA |



This immaculately presented luxury two bedroom ground floor garden apartment is being offered to the market with no on going chain. The accommodation comprises of a new modern kitchen, a large bright sitting room, bathroom, two light and spacious bedrooms with the master benefiting from an en-suite and also patio doors leading onto your private decking area, A fantastic purchase for either a first time buyer or an investor.

Landing 10' 8" x 9' 0" (3.25m x 2.74m)

Kitchen 14' 7" x 7' 8" (4.44m x 2.34m)

Front aspect, ceramic tiled floor and part tiled walls, high and low level storage, integrated dishwasher and washing machine, integrated fridge freezer, electric oven and grill with gas hob and extractor hood, quartz work surface with splash back.





Sitting Room 16' 2" x 10' 7" (4.92m x 3.22m)
Front aspect, electric feature fireplace with surround.



Master bedroom 11' 6" x 10' 8" (3.50m x 3.25m)

Rear aspect, fitted wardrobes, patio doors leading onto private decking area.

En-suite 7' 4" x 4' 5" (2.23m x 1.35m)

Ceramic tiled walls and floor, wash hand basin on pedestal, low level WC, shower cubical with rainwater shower head.





Bedroom 2 11' 6" x 9' 9" (3.50m x 2.97m)
Rear aspect.

Bathroom 7' 1" x 6' 4" (2.16m x 1.93m)
Ceramic tiled walls and floor, wash hand basin on pedestal, low level WC, panelled bath with shower attachment.

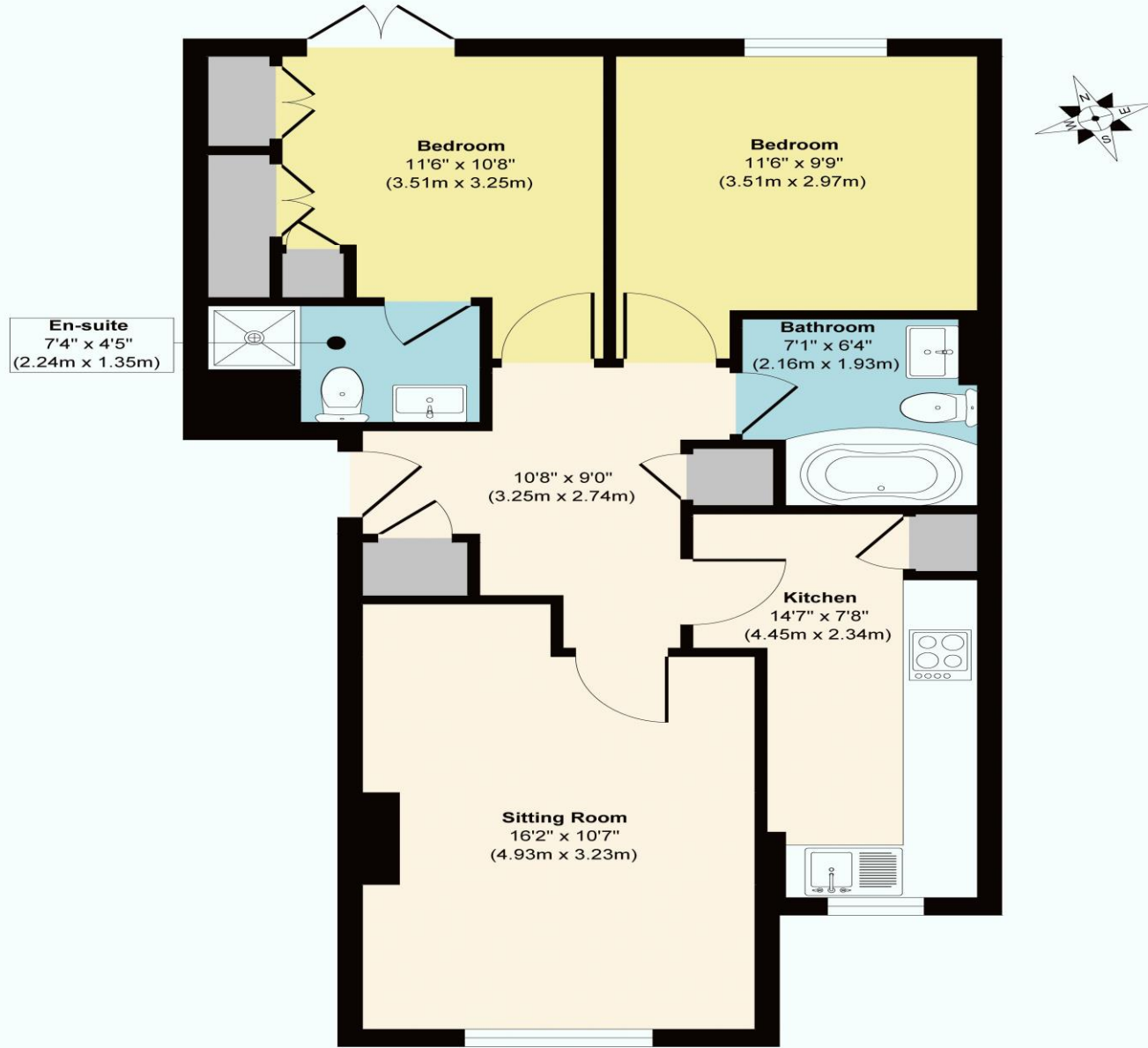


Private Garden

Communal Gardens

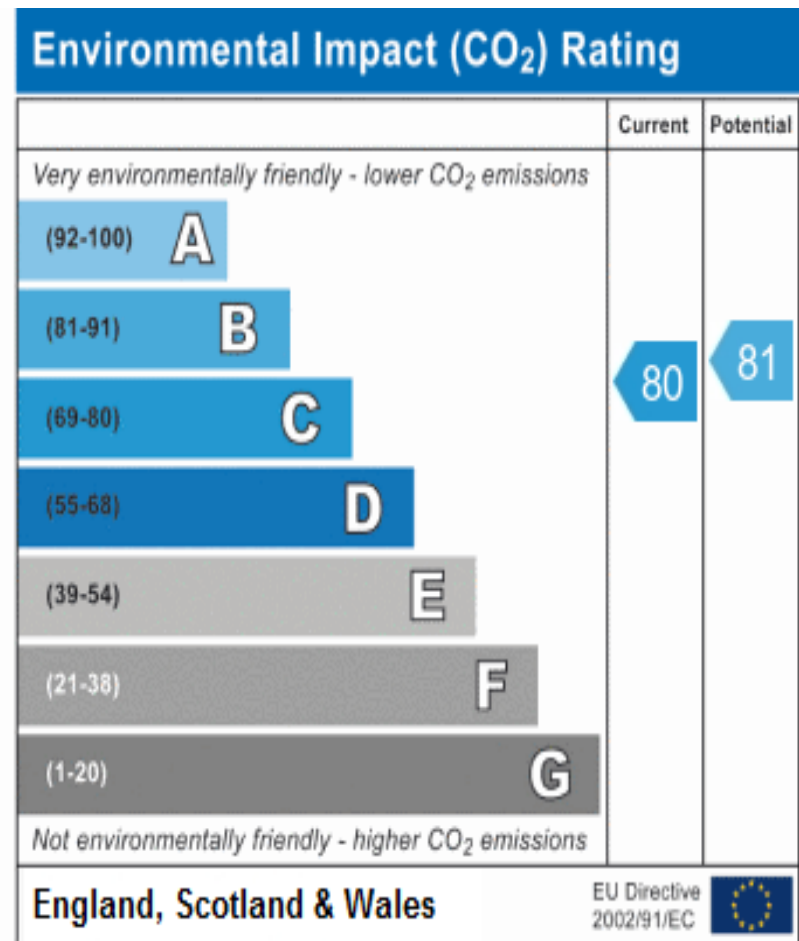
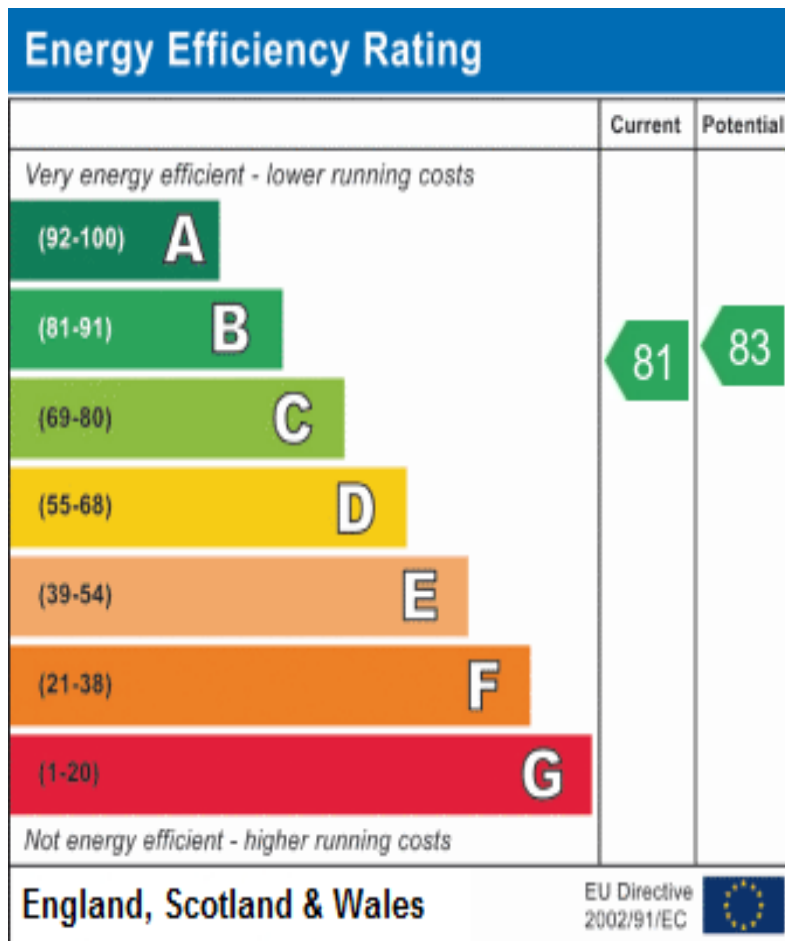


Kempton Court, TW16



Ground Floor
Approximate Floor Area
641 sq. ft
(59.55 sq. m)

Approx. Gross Internal Floor Area 641 sq. ft / 59.55 sq. m
Illustration for identification purposes only, measurements are approximate, not to scale.



These details are for guidance only and complete accuracy cannot be guaranteed. If there is at any point, which is of particular importance, verification should be obtained. They do not constitute a contract or part of a contract. All measurements are approximate. No guarantee can be given with regard to planning permissions or fitness for purpose. No apparatus, equipment, fixture or fitting has been tested. Items shown in photographs are NOT necessarily included. Interested Parties are advised to check availability and make an appointment to view before travelling to see a property.



HENLEY HOMES

0203 873 2700
 info@henleyhomes.agency | www.henleyhomes.agency